



**CLIVEPEARCE**  
Now you're moving

2 Bedrooms

House - Semi-Detached

Asking Price

£240,000

Located in

Truro



[www.clivepearceproperty.com](http://www.clivepearceproperty.com)



# Glenthorne Road

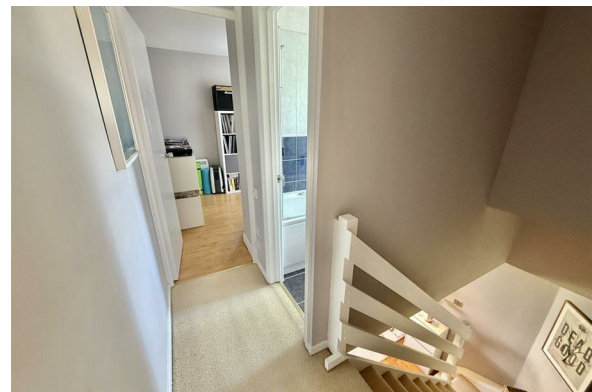
Truro | | TR3 6TT



This two double bedroom extended modern home is end of terrace and is located in a traffic free culdesac location

# Glenthorne Road

£240,000 Freehold




- Attractive brick faced semi detached home
- Living Room with attractive wood flooring
- White bathroom suite with shower over bath
- Double glazing
- Long front and enclosed rear gardens with feature circular patio
- Two double bedrooms
- Large and extended fitted kitchen/dining room
- Electric heating, (gas is connected)
- Traffic free culdesac location
- Popular and convenient village

## Council Tax Band B

## Local Authority

Agents Note: Whilst every care has been taken to prepare these particulars, they are for guidance purposes only. All measurements are approximate and are for general guidance purposes only and whilst every care has been taken to ensure their accuracy, they should not be relied upon and potential buyers/tenants are advised to recheck the measurements.

Energy Efficiency Rating		
	Current	Potential
<i>Very energy efficient - lower running costs</i>		
(92 plus) <b>A</b>		
(81-91) <b>B</b>		
(69-80) <b>C</b>		
(55-68) <b>D</b>		
(39-54) <b>E</b>		
(21-38) <b>F</b>		
(1-20) <b>G</b>		
<i>Not energy efficient - higher running costs</i>		
<b>England &amp; Wales</b>	EU Directive 2002/91/EC	

31 Lemon Street  
Truro  
Cornwall  
TR1 2LS



**CLIVEPEARCE**  
Now you're moving

hello@clivepearceproperty.com

01872 272622

www.clivepearceproperty.com